



DATASHEET

VIAjet™ VIApack

HIGH-RESOLUTION THERMAL INKJET PRINTERS

Increase your productivity with a complete thermal inkjet (TIJ) system right out of the box. Easily add capacity to your production line to meet increased demand or improve your marking efficiency with VIApack.

Ideal Applications

- + Primary, secondary, and tertiary packaging lines of any size
- + Single and multi-line text, 1D and 2D barcodes, logos, and graphics
- + Fixed and variable data, including date/lot codes, serialization, GS1

Advantages

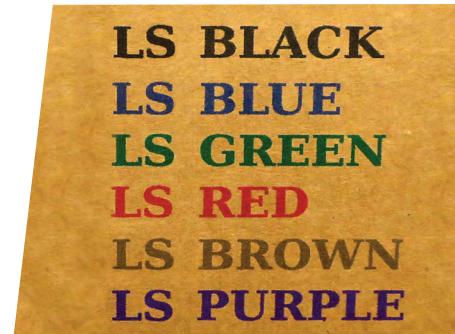
- + Complete TIJ marking system right out of the box
- + Straight-forward installation with everything needed to be up and printing in no time
- + True 600 dpi marking at 200 ft/min (60 m/min)
- + Cartridge based printheads mean virtually no maintenance
- + Complete upgrade path for MPERIA® protects your investment when growth means more capability is needed

Increase Production Line Efficiency

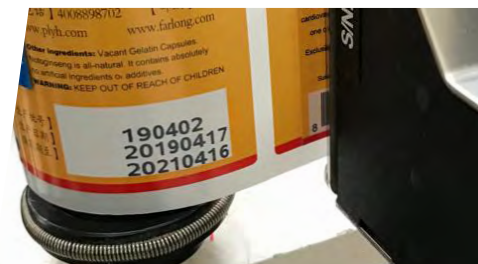
- + Centralize marking and coding control with the industry's only true universal controller, MPERIA
- + Smoothly transition from stand-alone marking to automated data flow
- + Add marking technology and systems without middleware

BEST IF USED BY:
01/01/2025

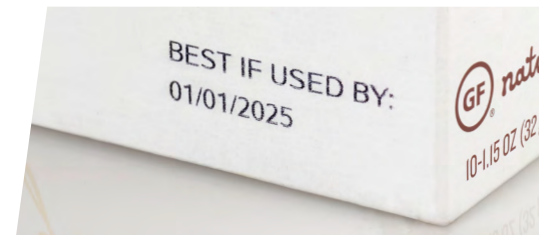
L12 mark on chipboard



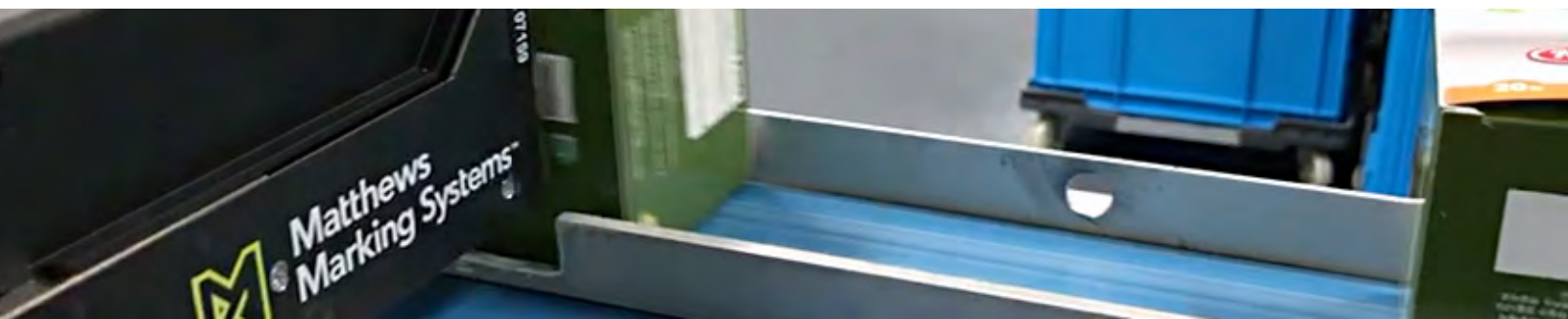
L12 marks on kraft brown corrugate



L12 mark on plastic label



L12 mark on white corrugate



VIApack Technical Specs

Operating Temperature and Humidity

- + Ink dependent⁽¹⁾

Inking System

- + Single-use cartridges and bulk-ink
- + Water-based and fast drying solvent-based inks, including MEK
- + Multiple color options

Electrical

- + L12: 96-264 VAC, 50-60 Hz, .8A
- + MPERIA Lite: 96-264 VAC, 50-60 Hz, 1A

IP Rating

- + L12: IP30
- + MPERIA Lite: IP42

Print Capabilities

- + TrueType fonts with unique ink saving print density and object color settings
- + Cost per mark and ink usage calculator
- + Static, dynamic, and user-editable variable fields
- + Customizable date and time codes, sequential and batch counters
- + 1D barcodes (GS-128, GS1 DataBar, EAN-8/13, UPC-A, ITF/ITF-14, Code 39/128)
- + 2D codes (GS1-Data matrix, Data matrix, QR and Micro QR code, PDF417)

Upgrade Options

- + MPERIA Editor adds on-board message editing
- + MPERIA Select adds barcode scanning
- + MPERIA Connect activates Ethernet for external communication and automatic data flow
- + MPERIA Portal adds remote control and monitoring via VNC
- + VIApack Expand adds support for an additional L12 printhead for double-sided printing as well as Active Bulk Ink System (ABIS) support

	Number of ink cartridges	Maximum print height	Maximum print speed @75 dpi ⁽²⁾	Maximum print speed @600 dpi	Printing direction	Printhead dimensions
L12	1	1/2" (12 mm)	1,600 ft/min (488 m/min)	200 ft/min (60 m/min)	Horizontal or down	3.4" x 5.1" x 8.3" (W x H x L) (87 x 129 x 210 mm)

MPERIA Lite

- + Intuitive 7" touchscreen user interface
- + Simple transfer of messages from PC via USB or direct via Ethernet (with MPERIA Connect upgrade)
- + Standard RS232 serial port, 2 USB ports
- + Reduce operator errors with simple message selection and real-time preview
- + Multiple upgrades to grow as your requirements change

Package Contents

- + 7" MPERIA Lite controller
- + VIAjet L-Series L12 1/2" (12 mm) TIJ printhead
- + Photocell
- + Mounting brackets
- + MPERIA® Creator: Windows-based message creator
- + Power supply
- + Manuals and software

Hardware Options

- + 1 additional VIAjet™ L-Series L12 for doublesided printing⁽³⁾
- + Encoder
- + Hand scanner
- + Warning light
- + Bulk ink delivery system⁽³⁾



⁽¹⁾ Typically 50–104 F/10–40 C, 10–80% RH (non-condensing) for water-based inks. ⁽²⁾ Multiple printheads can be linked to increase print speed by 2x–4x.

⁽³⁾ Requires VIApack expand license.